



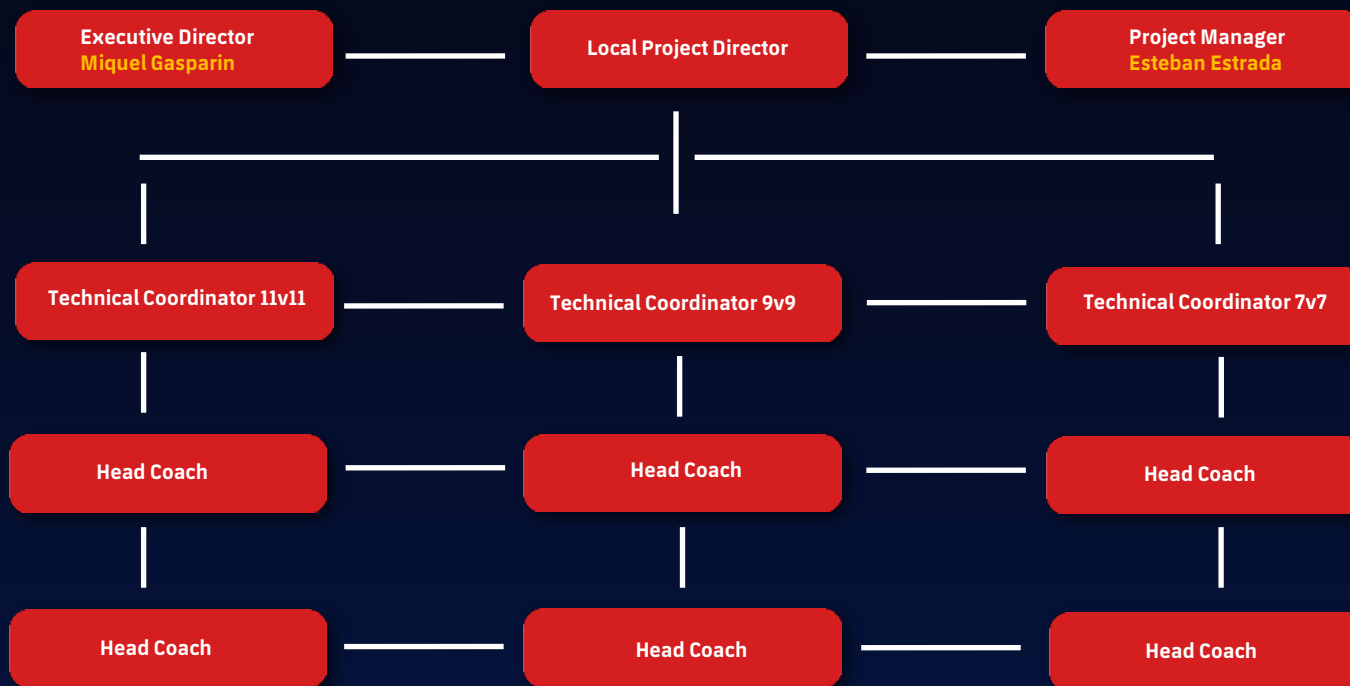
BARÇA
Academy

COLUMBUS

Season 2024/25



GOVERNANCE & STAFF



FACILITIES



Global International Columbus Academy School (2 x 11v11 fields)

4077 Karl Rd, Columbus, OH 43224



Soccer One Indoor Training (1x 7v7 and 2x 5v5)

3650 Parkway Lane, Hilliard, OH 43026

COMPETITION & PATHWAY



NATIONAL LEAGUE PATHWAY

The National League's new national competition format provides a unified pathway, full of meaningful games, that enables all teams to work toward a common objective: qualify for the US Youth Soccer National Championships.

Regular Season > National Events > National Championships



ACADEMY STRUCTURE

Boys and Girls 2019 to 2017 (U6 to U8)

Weekly training sessions (Fall)	2 x 75'
Competition (Fall)	N/A
Weekly Training Sessions (Winter)	Additional programming will be offered
Competition (Spring)	Internal competition
Weekly training sessions (Spring)	2 x 75'
Included Tournaments	N/A
Annual Fee	\$999

Boys and Girls 2016 to 2015 (U9 to U10)

Weekly training sessions (Fall)	2 x 75'
Competition (Fall)	Yes
Weekly Training Sessions (Winter)	2 x 60'
Competition (Spring)	Yes
Weekly training sessions (Spring)	2 x 75'
Included Tournaments	4
Annual Fee	\$1,500

Boys and Girls 2014 to 2011 (U11 to U14)

Weekly training sessions (Fall)	2 x 90'
Competition (Fall)	Yes
Weekly Training Sessions (Winter)	2 x 60'
Competition (Spring)	Yes
Weekly training sessions (Spring)	2 x 90'
Included Tournaments	4
Annual Fee	\$2,500

Boys and Girls 2014 to 2011 (U11 to U14) - NAL

Weekly training sessions (Fall)	3 x 90'
Competition (Fall)	Yes
Weekly Training Sessions (Winter)	2 x 60'
Competition (Spring)	Yes
Weekly training sessions (Spring)	3 x 90'
Included Tournaments	4
Annual Fee	\$2,900

Boys and Girls 2010 to 2006 (U15 to U19)

Weekly training sessions (Fall)	N/A
Competition (Fall)	N/A
Weekly Training Sessions (Winter)	2 x 60'
Competition (Spring)	Yes
Weekly training sessions (Spring)	3 x 90'
Included Tournaments	4
Annual Fee	\$1,995

Boys and Girls 2010 to 2006 (U15 to U19) - NAL

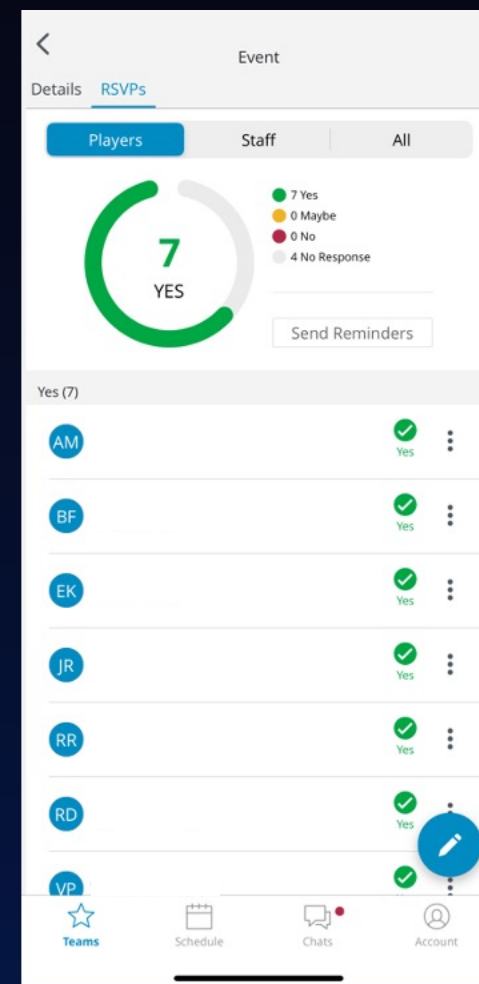
Weekly training sessions (Fall)	N/A
Competition (Fall)	N/A
Weekly Training Sessions (Winter)	2 x 60'
Competition (Spring)	Yes
Weekly training sessions (Spring)	3 x 90'
Included Tournaments	4
Annual Fee	\$2,995

❖ OPTIMIZE THE COMMUNICATION PROCESS WITH FAMILIES

- **SportsEngine.** Use SportsEngine for everything related to attendance for training and games (see picture on the right).
- **Parent volunteers.** They will be the connection between the Academy and the teams in terms of communication for team-based events.
- **Team updates.** If you are unable to attend a training/game, let the coach know through SE.
- **WhatsApp.** Pros and cons. To discuss during the meeting.

• COMMUNICATION CHART

- **General email:** columbus@fcbarcelona.us
- **Project Manager:** eestrada@islagency.com
- **Local Project Director:**
- **Executive Director:** mgasparin@fcbarcelona.us
- **Tech. Coordinator 11v11:**
- **Tech. Coordinator 9v9:**
- **Tech. Coordinator 7v7:**



TRYOUT PROCESS

Day	Time	Age Group
Wednesday, May 1st, 2024	5 pm to 6 pm	2017, 2016, and 2015 Boys and Girls
Wednesday, May 1st, 2024	6:15 pm to 7:15 pm	2014 and 2013 Boys and Girls
Wednesday, May 1st, 2024	7:30 pm to 8:30 pm	2012 and 2011 Boys and Girls

 *Global International Columbus Academy School*

Day	Time	Age Group
Thursday, May 2nd, 2024	5 pm to 6 pm	2017, 2016, and 2015 Boys and Girls
Thursday, May 2nd, 2024	6:15 pm to 7:15 pm	2014 and 2013 Boys and Girls
Thursday, May 2nd, 2024	7:30 pm to 8:30 pm	2012 and 2011 Boys and Girls

 *Global International Columbus Academy School*

Day	Time	Age Group
Friday, May 3rd, 2024	5 pm to 6 pm	2010 to 2008 Boys
Friday, May 3rd, 2024	6:15 pm to 7:15 pm	2010 to 2008 Girls
Friday, May 3rd, 2024	7:30 pm to 8:30 pm	2007 and 2006 Boys and Girls

 *Global International Columbus Academy School*

PARENTS MEETING



Crowne Plaza Columbus North Worthington

6500 Doubletree Ave, Columbus, OH 43229



Sunday, April 14th, 2024



Meeting kick-off: 5:30 pm



BARÇA
Academy

COLUMBUS

